



StarFire™
SG-1024





SATYAKRITY

A TOTAL SIGNAGE SOLUTIONS

An ISO 9001: 2008 Certified Company

About
Us

The Most Professional
Total-Solution Provider.

We provide you with total solutions and
one-stop service.

A total printing solution provider
with over 15 years of experience.
We are always at the forefront of
innovation and development to
ensure we provide customers with
the best solutions for your markets.
Your satisfaction is always at the
heart of our business. In the past
decade, we have branched out
into sign market, digital printing and
industrial applications. In order to
provide the total solutions for clients.

WIT-COLOR

Digital

ECO SOLVENT PRINTERS

Adopted new Epson DX **5** Print head! Quality Upgraded!



2.3m/3.3m



1.6M

Technical Specifications

Model	ULTRA 9100 1601/1602, 2301/2302, 3302		
Printhead Quantity	Epson DX5 1/2 pcs		
Printing Width	1.6m, 2.3m, 3.3m		
Printing Speed	Resolution Mode	Printing Speed H1	Printing Speed H2
	360x1080dpi (3PASS)	31 m ² /h	62m ² /h
	360x1440dpi (4PASS)	21 m ² /h	42m ² /h
	360x2160dpi (6PASS)	16m ² /h	32m ² /h
	360x2880dpi (8PASS)	12m ² /h	24m ² /h
Color Mode	16,7million.CMYK		
Ink	CMYK W: Waterbased Inks S: Eco-solvent Based Inks		
Media	Media Width	1.6m, 2.3m, 3.3m	
	Media Handling	Roll to Roll+Auto Feeding+Auto Roll Up	
	Media Heating	Pre & Post-Media Heating	
	Media Drying	Cool Fans/ Thermal Fans (Optional)	
	Media Types	W Series: Water based on media (Photo Paper, Vinyl,PP, Film etc) S Series: outdoor Eco-solvent based roll media(Flex, Vinyl, Leather etc)	
Image Format	TIFF, JPG, EPS, PDF		
RIP Software	Maintop/Photoprint Optional		
Interface	USB2.0 (Window2000NT/XPetc)		
Operation System	Windows XP/Win 7 Workstation		
Power Supply	AC220V 50HZ ± 10%,UPS is required		
Power	3000W / 5000W		
PC Configuration	System: Windows XP SP2 (English Version)/Win7 32bit (Professional or Ultimate Version) CPU: Intel Dual Core 15 RAM: 26B HardDisk: SATA 640G Hard Disk Format: NTFS VGA Card:SDC ATI 1G CD Rom: DVD Rom Space for Disk C: 100G at least		
Temperature/Humidity	Temperature 20-30°C, Humidity 60-70%		
G.W/N.W	260kg/190kg	400kg/300kg	750kg/650kg

Remark: The data is subject to change without prior notice. The speed will be varied due to different PC settings.

1024 ULTRA STAR

High Speed Spectra StarFire 1024
Solvent Printer-ULTRA STAR Series



★ 10PL 720dpi ★ 25PL 360dpi

*2/4/8 pcs Spectra Star Fire 1024 All Steel Industrial Print Head
Maximum Speed of 420 m²/h
Drop Volume of 10/25PL 8 Level Grayscale Technology*



Ultra Star 3306/3308 25PL



Ultra Star 3302/3304 25PL/10PL



StarFire™

SG-1024

StarFire Technical Specifications



Adopted 2/4/8 pcs American Spectra Star Fire 1024 industrial Print Heads



1024 Nozzles, 25pl Drop Volume, Incomparable Printing Performance



Amazing 10 Years' Using Life of the Print Head Less investment with High Payback.



High Printing Speed : 420 sqm/hour



Automatic Media Feeding and Take-up System



Infrared Heating and Drying System



With RediJet Technology, the Automatic InK Circulation System Guaranteed the Smooth, Continuous Printing.

Model		Ultra Star Series		
Printhead Quantity	Spectra Star Fire 1024 2/4/8H			
Printing Width	3.2m			
Printing Speed	Printing Mode	Printing Speed		
		Ultra Star 3308	Ultra Star 3304	Ultra Star 3302
	2PASS	420m ² /h (1X2)	200m ² /h	100m ² /h
	3PAS	N/A	130m ² /h	70m ² /h
4PASS	21 Om ² /h (2 x2)	100m ² /h	50m ² /h	
InkType	CMYK Solvent Ink			
Media	Media Processing	Roll to Roll + Auto Feeding + Auto Roll Up		
	Media Heating	Pre & Post-Media Heating		
	Media Types	Outdoor Solvent based roll media(Flex, Vinyl, Leather etc.)		
Image Format	TIFF, JPG, EPS, PDF			
RIP RIP Software	PHOTOPRINT / ULTRAPRINT Maintop / Photoprint (Optional)			
Interface	PCI LVDS (Window2000/NT/XP etc)			
Operation System	Windows XP/Win 7 Workstation			
Power Supply	AC220V 50HZ ± 10%,UPS is required			
Power	5000W			
PC Configuration	System: Windows XP SP2 (English Version)/Win7 32bit (Professional or Ultimate Version) CPU: Intel Dual Core 15 RAM: 26B HardDisk: SATA 640G Hard Disk Format: NTFS VGA Card: SDC AT11G CD Rom: DVD Rom Space for Disk C: 100G at least			
Temperature/Humidity	Temperature 20-30°C, Humidity 60-70%			
Packing Size	4.92x1.13x1.75 m(H8/H4) L/VWH: 4.92x1.13x175m (H8/H4)	4.92x1.13x1.13 m(H2) 4.92x1.13x1.13m(H2)		
G.W/N.W	1010kg/770kg		830kg/590kg	

Remark: The data is subject to change without prior notice. The speed will be varied due to different PC settings.

JD-05 Solvent Printer



JD-05 Solvent Printer Technical Specifications

Print Control	
Print Technology	Industrial piezoelectric inkjet
Ink Types	Solvent Ink
RIP Software	Photoprint, Maintop
Colour Configuration	4Color (C/M/Y/K)
Operating System	Win7/10 64bits
Image Format	TIFF/JPEG/EPS/PDF
Printhead Height	2~8mm Above Media Adjustable
Media Type	Vinyl, Flex, Polyester, Back-lit Film, Window Film, etc.
Media Standard	Maximum Media Width 3,300mm (10.8ft)
Printing Width	3200mm, Maximum Print Width 3,200mm (10.5ft)
Media Transmit	Media Feeding System (Max Media Weight 120kg)
Printing Drying System	
Heating & Drying System	Equipped (Infrared Ray+Fan Drying)

Interfaces	
Data Interface	Hi-Speed USB 2.0.
Specification	
Machine Dimension/Weight	L5,000XW1,030XH1,580mm / Net Weight 880KG
Package Dimension/Weight	L5,100x W1,070 x H1,680mm / Gross Weight 1000KG
Working Conditions	
Humidity	20°C-28°C
Temperature	40%-60%
Power Supply	
Maximum Power	3.5KW
Access Parameter	AC220V.50HZ/60HZ

Product Speed	Jd05	
Printhead	KM512i-30PL 8 Heads	KM512i-30PL 4 Heads
High speed mode	480X720 2pass 230sqm/h	480X720 2pass 110sqm/h
Standard mode	480X1080dpi 3pass 160sqm/h	480X1080dpi 3pass 80sqm/h
High-quality mode	480X720 4pass 120sqm/h	480X720 4pass 60sqm/h

Remark :The data is subject to change without prior notice. the speed will be varied due to different PC settings.

ORIONJET UV PRINTER

**3PCS PRINthead UV PRINTER
PRINT CMYK Lc Lm+WHITE+VARNISH
AT THE SAME TIME**



Adsorption Platform



Automatic Height Sensor



Ink Pump



Automatic Wiper Cleaning



Automatic White Ink
Shaking System



Lifting Platform

ORIONJET UV6090 Technical Specifications

Model type	UV6090
Nozzle configuration	3pcs Epson DX11
Maximum printing area	600mm x 900mm
Color	CMYK Lc Lm + WHITE + VARNISH
Print speed	8Pass 6m ² /h 12Pass 4m ² /h 16Pass 3m ² /h
Machine	UV PRINTER
Print material	Type: acrylic, aluminous model board, board, ceramic tile, foam board, sheet metal, glass, card board, leather, phone case and other flat media
Printing height	Thickness: 0mm-100mm Max size:600mmx900mm
The UV lamp	LED-UV180W*3 only420W life 20000-30000 hours water cooling
Data transfer interface	USB2.0
RIP software	Ultraprint, PhotoPrint
Supply voltage, power	AC220V.hosts the largest 1350W.LE D-UV lamp, max 200-400W.1500W vacuum suction motor
Image Format	TIFF, JPG, POSTSCRIPT3, EPS, PDF, etc.
Color Control	ICC based, with curves and density adjustment function
Print Resolution	720*360dpi. 720* 720dpi. 360* 1080dpi, 720* 1080dpi. 720* 1440dpi. 1440* 1440dpi
Operating environment	temperature:27-35C humidity:40%-60%
Available ink	UV ink
Package size	1600mm* 1600mm* 1000mm 200kg

ORIONJET UV PRINTER



Technical Parameter

Print Technology	Industrial piezoelectric inkjet
Ink Types	Environmental protective UV ink
RIP Software	PhotoPrint Jade DX RIP
Colour Configuration	4Color/6Color/White/Varnish Option
Operating System	Win7/10 64bits
Image Format	TIFF/JPEG/EPS/PDF/AI
Printhead Height	0 ~ 90mm Above Media Adjustable
Media Type	Wood panel, Aluminum panel, door plank, paperboard, PVC expansion : sheet, ceiling panel, glass, ceramics, acrylic, PVC, etc.
Maximum Printing Area	Panel : 2,500mm (width) x 1,300mm (depth)
Maximum Weight of Material	Panel : ≤100kg/m ²
UV Curing Lamp	LED Water Cooling System
Data Interface	Hi-Speed USB 2.0
Temperature & Humidity	15-32°C (59 to 90°F) 20°C (68°F) or more recommended 35 to 80% RH (no condensing)
Operating Noise	≤80dB
Maximum Power	5KW
Access Parameter	AC220V(± 5%),50HZ/60HZ
Machine Dimension/Weight	L4100x W2000 x H1350mm / Net Weight 1350KG
Package Dimension/Weight	L4240x W2,180 x H1550mm / Gross Weight 1530KG



Y-axis high precision double screw



Double negative pressure adjustment meter



Stable and durable German IGUS towline



Scratch-resistant printing platform



UV solidify/Electrostatic canceller
Crash avoidance device



Industrial belt



Double THK Straight Silent Rail



Ink Monitoring System

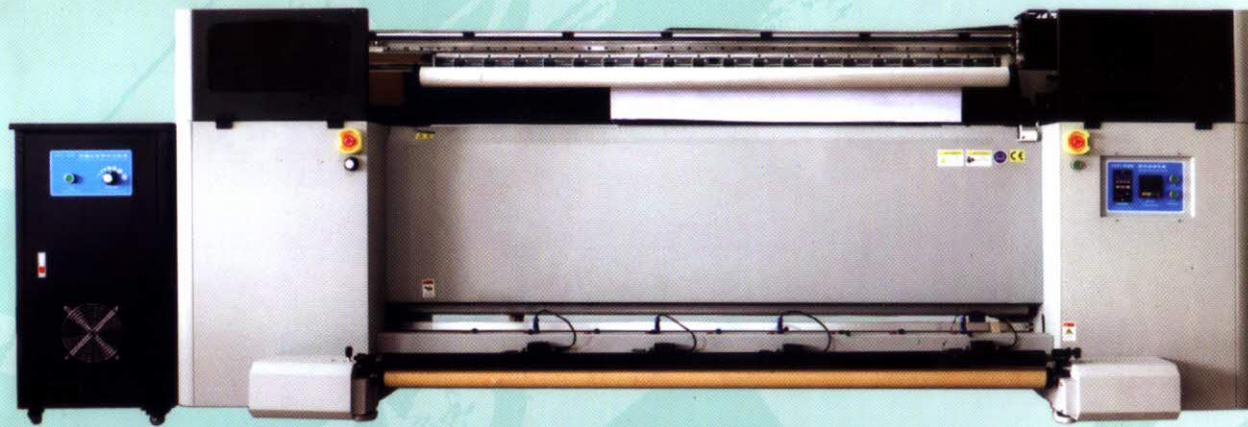
Print speed

Product Model	Jd2513
Printhead Model	GEN5
Number of Printhead	6 Heads
Ink Color	● ● ● ● ● ●

Product Model	Jd2513
Printhead Model	GEN5
Number of Printhead	3 Heads
Ink Color	● ● ● ● ● ●

OJ-2000T TEXTILE FLAG PRINTER

Integrated Heating System, Uniform heating color



Can produce a variety of flags, advertising direct spraying fabric, green environmental protection. Constant tension and high precision feeding system to ensure accurate and stable feeding

Industrial micro voltage EPS3200 print head

Increase automatic cutting function Nine cutting knives automatically cut Four cutting knives operate in real time



National Flag



Advertising Flag



Beach Flag



Curtain



Sheets

Model		OJ-2000T Textile Flag Printer	
Printhead	EPS3200	5113	
Print Head number	2	22	
Print Mode	4C	4C	
Print Width	1900mm		
Print Speed (sqm/h)	3 pass	47m ² /h	40m ² /h
	4 pass	35m ² /h	32m ² /h
Print Resolution	1440DPI	1800DPI	
Media Type	Banner, Advertising Flag, Flag, Curtain		
Media Thickness	1.5mm < Material < 5mm		
InkType	Sublimation Ink		
Curing System	Integrated Heating System		
File Format	BMP/TIFF/PDF/JPEG/EPS		
RIP	Maintop 6.0		
Data Connector	USB3.0		
Power	220VAC(± 10%) Single Phase, 50/60 HZ		
Power Consumption	7KW	6KW	
Machine Size	3.5m(L)*1.06m(W)*1.4m(H)	3.01m(L)*1.0m (W)*1.45m(H)	
Machine Size	4.68m(L)*1.55m(W)*1.65m(H)	3.1m(L)*1.2m(W)*1.65m(H) 3.1m(L)*0.75m(W)*0.7m(H)	
Environment Requirement	seperated, clean, low dust, well-ventilated, environmental temperature:20°C-25°C relative humidity:50%-60%		

LASER CUTTING MACHINE AUTO HOT/COLD LAMINATOR 1600A



Technical Specifications

- ABS double color sheet, acrylic sheet, wood, glass, paper, leather, cloth plastic, rubber, marble, ceramic tiles and other nonmetallic materials.

Product Model	Single Head GS6040/GS9060/GS1280/GS1490/GS1612/GS1910
Laser type	CO2 Hermetic and detached CO2 laser tube
Laser power	60W/80W/100W/120W/150W/180W
Cutting speed	0-36000mm/min
Engraving speed	0-64000mm/min
Resetting positioning accuracy	0.01mm
Resolution ratio	0.025mm
Highest scanning precision	2500 DPI
Graphic format	AI, CDR, BMP, JPG, DST, PLT, DXF, DWG, TIFF, PSD
Supported software	CorelDraw, Photoshop, AutoCAD etc.
The smallest cutting characters	2.0mm x 2.0mm, 1.0mm x 1.0mm Character 2.0mm*2.0mm, English 1.0mm*1.0mm
Power supply	220V/50HZ
Whole power	< 1000W
Operating temperature	0°C-45°C
Operating humidity	5-9%/Free of condensed water

Model	Dimension (mm)	Processing area (mm)	Net weight (KG)
GS6040	1130x860x1000	600x400	150
GS9060	1430x1060x1000	900 x 600	220
GS1280	1730x1380x1000	1200x800	294
GS1490	1930x1480x1000	1400x900	325
GS1612	2130x1780x1000	1600x1200	380
GS1910	2430x1500x1100	1900x1000	480

The parameters above are subject to change without notice.
(2015.03)

Introduction:

AUTO cold laminator 1600A is a professional equipment in the printing and post-processing, cater to your varying needs, widely used in the advertising, exhibition organizers, picture production, studio and many other fields, become the most ideal corollary equipment of digital printing products.

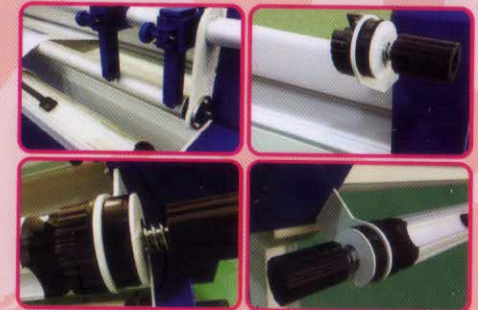


INTRODUCTION

Products Features :

- Electric model
- Hot laminating, heating up to 120°C
- Air cylinder control lifting at double sides
- Silica roller, anti-sticking, long using life

production, studio and many other fields, become the most ideal corollary equipment of digital printing products.

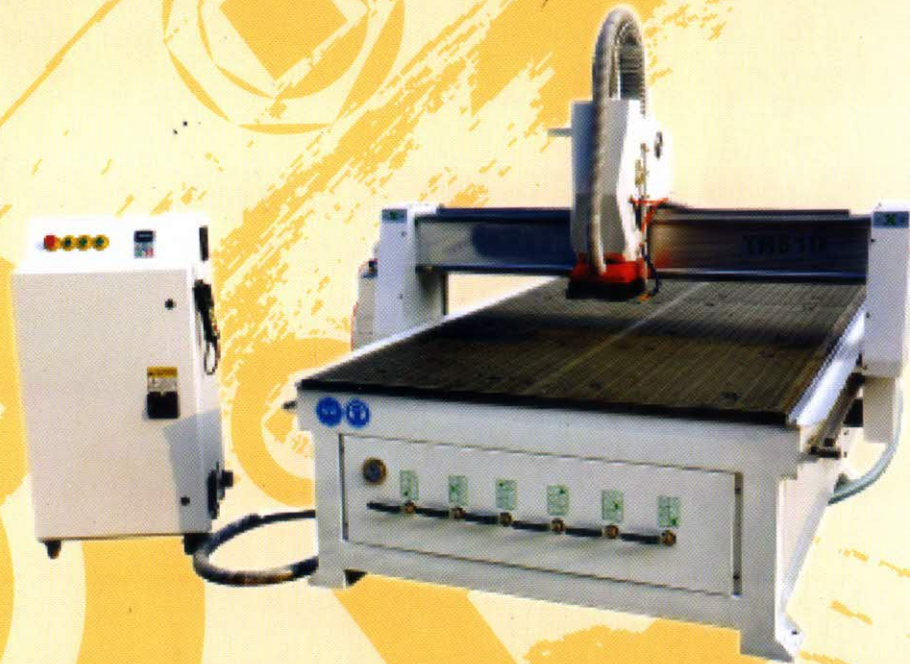


Model	1600A
Max laminating width	1620mm
Mas lamination thickness	35mm
Max speed	7m/min
Max temp	Room~1250C
Roller upgrade	Air Cylinder
Heating	Infrared
Preheating	10-15min
Power input	0.8-1.0kw/h
Volt.	220v
N.W.	250kgs

Application:

Self-adaptive coated thickness, adjustable laminating pressure, fit for laminate rolling media and flat surface board. Simple operation, wide suitability, dependable safety, multiple functions. Fit to hot film, traditional cold film, PET Polymer film.

CNC Router



T-slot table



Vacuum table



Mixed T-slot & vacuum table

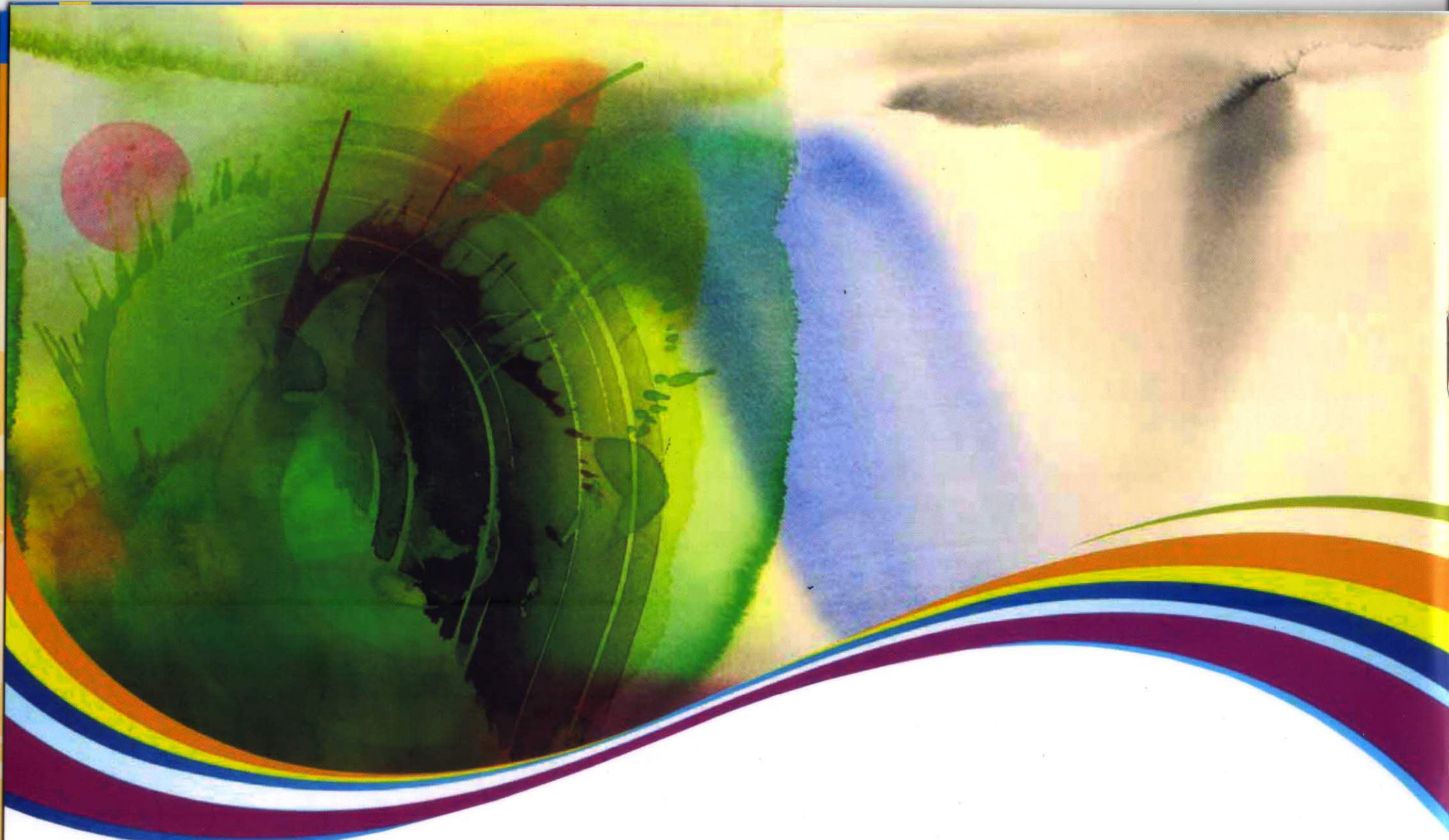


Cast aluminum table

This machine can be equipped on request with a different kind of table as Vacuum table, T-slot table, Cast aluminum table and mixed table. Also on request it can be supplied with a Italian air cooled spindle or a Chinese water cooled spindle. Designed for wood working industry, sign industry, 3D engraving applications.

CNC Router TR 408/510 Technical Specifications

Item	Description	TR 408/510
1	X, Y, Z working area	1300x2500x200m m/1500x3000x200mm
2	Table size	1665x3500mm/1465x3200mm
3	Resolution	± 0.03/300mm
4	Repeatability	± 0.05mm
5	Machine structure	Stressless welded steel tubes
6	X structure	Rack and pinion, linear guides
7	Y structure	Rack and pinion, linear guides
8	Z structure	Ball screw, linear guides
9	Max. consume power	6.5 kw
10	Max. rapid speed	40000mm/0-45000mm/min
11	Max. working speed	30000mm/0-30000mm/min
12	Spindle power motor	3.0kw/4.5kw/6.0kw/7.0kw Italian air cooling spindle
13	Spindle speed	0-18000rpm
14	Working mode	Stepper motor/Sprvo
15	Working voltage	AC220/380V, 50/60Hz, 3PH
16	Command code	G code
17	Operating system	NC-Studio system or MachS system
18	Interface	USB
19	Memory	128MB (or flash drive)
20	X, Y working accuracy	< 0.01 mm
21	Software	Artcam Express, Vectric, Aspire
22	Packing size	3380x1980x1980mm/3680x2130x1850mm
23	Gross weight	1600/1750kgs



SATYAKRITY

RAM

A TOTAL SIGNAGE SOLUTIONS

An ISO 9001: 2008 Certified Company

Kolkata

7th floor, Room No. 713,4, Synagogue Street,
Kolkata-700 001, India

Ph : +91 33 2242 4691, 4003 6794,

+91 98312 77424, 9903278419, 9088013301

URL: www.satyakrity.com, www.satyakrity.net

Email: satyakrity@hotmail.com, info@satyakrity.com

Guwahati

2nd Floor, Devendra Complex
Manipuri Basti, Paltan Bazar,
Guwahati-781007, Assam

Ph : +91 9831277424

+91 8471844451